

ELIZABETH CITY STATE UNIVERSITY

FACT BOOK

2019 - 2020



Table Contents

Introduction.....	4
Historical Highlights.....	5
Founding.....	5
Early Leadership.....	5
Continued Growth.....	5
Today.....	5
Historic Location.....	8
Mission Statement.....	9
Vision Statement.....	9
Institutional Goals.....	10
Memberships.....	11
Accreditations.....	12
Board of Trustees (2019 – 2020).....	13
Organizational Structure.....	14
Important Telephone Numbers.....	15
Application, Acceptances, & Enrollees.....	16
New Freshmen High School GPA.....	17
New Freshmen High School Class Rank.....	17
Completed Applications & Acceptance from 21 NENC Counties.....	18
Profile of Enrolled New Freshmen (Fall).....	19
Profile of Enrolled New Freshmen (Spring).....	20
Profile of Enrolled New Transfers (Fall).....	21
Profile of Enrolled New Transfers (Spring).....	22
Profile of Enrolled Undergraduates (Fall).....	23
Profile of Enrolled Undergraduates (Spring).....	24
Profile of Enrolled Graduates (Fall).....	25
Profile of Enrolled Graduates (Spring).....	26
All Students by Classification (Fall and Spring).....	27
All Students by Majors.....	28
Enrollment by State Fall 2015-2019.....	30
Enrollment by Counties for North Carolina.....	31

Enrollment from 21 *NENC Counties	33
(New Freshmen)	33
Enrollment from 21 *NENC Counties	34
(New Transfers)	34
Enrollment from 21 *NENC Counties	35
(Undergraduates)	35
Summer School Profile of Enrolled Students	36
(Undergraduates)	36
Summer School Profile of Enrolled Students	37
(Graduates).....	37
Headcount by Total Student Credit Hours	38
(Undergraduates)	38
Headcount by Total Student Credit Hours	39
(Graduate Students)	39
Student Credit Hours by Category & Residence Status	40
Degrees Conferred by Departments.....	41
Characteristics of Degrees Conferred	42
Retention Rates	43
Graduation Rates	43
Full-Time Faculty & Staff by Occupational Activity.....	44
Full-Time Instructional Faculty by Highest Earned Degree	45
Full-Time Instructional Faculty by Academic Rank	45
Full-Time Instructional Faculty by Tenure Status.....	45
Full-Time Instructional Faculty by Ethnicity	46
Financial Summary (Revenue)	47
Financial Summary (Expenditures)	52
Facilities.....	52

Introduction

The Elizabeth City State University (ECSU) Fact Book is an annual publication that provides official statistical information about various aspects of the university's operations. We believe this document will serve as a valuable reference and resource tool for research and planning to our campus community and the public. Information presented in the Fact Book is representative of mandated reports submitted and approved by the University of North Carolina General Administration, unless otherwise noted.

In continuing our efforts to provide timely information, staff in the Office of Institutional Effectiveness, Research, and Planning is committed to refining this document each year. Therefore, your comments and suggestions are important to us for future improvements. Please do not hesitate to send comments and suggestions to me at fmokanda@ecsu.edu or complete our survey <http://surveys.ecsu.edu/cgi-bin/qwebcorporate.dll?Z79ZBH>.

Thank you very much,

Dr. Fred Okanda, Director
Office of Institutional Effectiveness, Research, and Assessment

Historical Highlights

Founding

On March 3, 1891, **Hugh Cale**, an African-American representative in the N.C. General Assembly from Pasquotank County, sponsored House Bill 383, which established a normal (teaching) school for "teaching and training teachers of the colored race to teach in the common schools of North Carolina." The bill passed, and the origin of Elizabeth City State University was born.

Early Leadership

The first leader, **Peter W. Moore**, was called a Principal (subsequent leaders would be called President, then Chancellor). Moore served as Principal and then President until his retirement as President, Emeritus, on July 1, 1928. During his tenure, enrollment increased from 23 to 355 and the faculty from two to 15 members.

During the tenure of the second president, **John Henry Bias**, the institution was elevated from a two-year normal school to a four-year teachers college (1937). Two years later, the institution's name was officially changed to **Elizabeth City Teachers College** on March 30, 1939. The growth and elevation to teachers college changed the mission to include training elementary school principals for rural and city schools. The first Bachelor of Science degrees in elementary education were awarded in May of 1939.

Continued Growth

Between 1959 and 1963, the institution became more than a teaching college, adding 11 academic majors to the original elementary education major. In 1961, the college joined the Southern Association of Colleges and Schools accrediting group (SACS) and maintains its accreditation with that body to the present. In 1963, the N.C. General Assembly changed the institution's name from Elizabeth City State Teachers College to Elizabeth City State College and on July 1, 1969, the college became **Elizabeth City State University**. In 1971, the General Assembly redefined the University of North Carolina system with 16 public institutions, including ECSU. Together, those institutions became constituents of The University of North Carolina (July 1972).

Today

Academics. Currently ECSU offers over 30 academic programs of study. From business to music to aviation and education, ECSU prepares students to compete in the global work force. We achieve our commitment to the highest quality education by maintaining a rigorous focus on academic excellence through liberal arts programs and using innovative and flexible technology-based instruction models to enhance our signature areas: integrating technology with education, improving human health and wellness, and advancing the natural and aviation sciences. As of May 2018, undergraduate and/or graduate degrees have been conferred upon more than 20,000 students.

Rankings. Over the years, the university fared well among publications that rank institutions. ECSU has earned national acclaim for its advancements: U.S. News and World Report ranked ECSU as the #3 Top Public School in the Regional College South for its 2020 Best Colleges list, #7 for Top Performers in Social Mobility, #26 for Best Regional College South, and #28 Historically Black Colleges and Universities. Washington Monthly ranked ECSU #13 Best Bang for the Buck School (2019). Best Historically Black Colleges ranked ECSU #6 (2020). CollegeNET, Inc. ranked ECSU #7 for Social Mobility Innovator (2019). ECSU was ranked a Top 5 Military Friendly® School for small public institutions (2020-21). Military Times ranked ECSU 84th in the nation for Best Bet for Vets among 134 universities (2020).

On December 14, 2018 Dr. Karrie Dixon was named 12th Chief Executive Officer and 7th Chancellor of Elizabeth City State University.

Updated February 2020

Source: University Relations & Marketing

Historic Location

Located in the historic Albemarle area near the mouth of the Pasquotank River, Elizabeth City State University offers students the opportunity to receive an excellent education while enjoying a wide variety of recreational and cultural amenities. Favored by a mild climate and proximity to the world renowned Outer Banks recreation area, ECSU has features that help make student living and learning both exciting and fulfilling. In addition, the university offers students a variety of social programs, cultural programs, religious and musical organizations and clubs. Honor and Recognition societies, as well as fraternities and sororities are also available to students. ECSU also has a variety of athletic sports events.

Students may also wish to take advantage of the historical sites in the greater Albemarle and southeastern Virginia areas. Williamsburg, Jamestown, Roanoke Island, Yorktown, several antebellum plantations, beaches and waterways are among sites within an easy drive from the campus.

United States Highways 17 and 158 make the city and the university easily accessible by automobile. City bus routes, hotels and motels are available to accommodate overnight visitors, and the university is just over an hour's drive from the Norfolk (Virginia) International Airport.

The university is situated on 114 acres which represent the campus proper. Another 68 acres comprise the former farm on Weeksville Road (N.C. 34); a 639-acre tract in Currituck County helps preserve the nation's diminishing wetlands and provides for educational research; and 35 acres serve residential or expansion purposes. There are also small sites in Utah and Virginia used, respectively, for geological instruction and institutional enhancement.

Mission Statement

As a constituent institution of The University of North Carolina System, Elizabeth City State University offers baccalaureate, professional, and master's degrees for a diverse student body. Our mission is to promote economic, social, and environmental progress for the people of northeastern North Carolina, the state, and the nation.

We achieve our commitment to the highest quality education by maintaining a rigorous focus on academic excellence through liberal arts programs and using innovative and flexible technology-based instruction models to enhance our signature areas: integrating technology with education, improving human health and wellness, and advancing the natural and aviation sciences.

Through teaching, research, and community engagement, the institution's rich heritage and its current multicultural student-centered focus provide a firm foundation for its endeavors. It serves the needs and aspirations of individuals and society; producing graduates for leadership roles and life-long learning.

Approved: Board of Governors for the University of North Carolina, November 2014

Vision Statement

Elizabeth City State University will be a premier public institution and a leading partner for economic, social, and environmental progress. We will be a destination institution that develops leaders who will make a positive difference now and in the future.

Institutional Goals:

According to the 2014-2019 Strategic Plan, the goals of the University are as follows:

1. **Global Readiness:** ECSU will offer high-quality degree programs in a student-centered environment and will deliver them in a manner that enhances student learning and prepares graduates to be globally competitive leaders in the 21st century.
2. **Higher Education Access:** ECSU will, through its outreach programs and retention efforts, provide access to higher education for all citizens of North Carolina. ECSU recognizes that learning is a life-long process and thus provides opportunities for developing more joint and shared degree programs while making education more accessible and affordable.
3. **Public Education:** ECSU will remain actively engaged in supporting the 21 county school systems of northeastern North Carolina through initiatives and programs to improve classroom instruction, curriculum development, and K-12 professional development.
4. **Our Communities and Their Economic Transformation:** ECSU will foster collaborative relationships with regional partners to facilitate sustainable economic growth in the region.
5. **Our Environment:** ECSU will be proactive in collaborating with its community partners to improve the quality of life for current and future generations in northeastern North Carolina by addressing climate change, sea-level rise, and other environmental issues critical to the region.
6. **Our University's Outreach and Engagement:** ECSU will integrate outreach and engagement into its academic and support services to enrich the students, faculty, staff, and citizens of northeastern North Carolina.
7. **Our Health:** ECSU will work to reduce disparities in health by strengthening the health services and available resources for citizens in northeastern North Carolina.
8. **Our Diversity:** ECSU will be committed to creating diversity in all aspects of University life.
9. **Our Graduates:** ECSU will produce graduates that are prepared for leadership roles and lifelong learning in a global society.

Memberships

The university as a whole, or through components, has current memberships in various professional learned organizations. Memberships are held in the following:

American Council on Education
 American Association of Colleges for Teacher Education
 American Association of Higher Education American
 Association of School Administrators American
 Association of State Colleges and Universities American
 Library Association
 American Mathematical Society
 American Political Science Association
 Associated Collegiate Press
 Association to Advance Collegiate School of Business
 Association for General and Liberal Studies
 Association of Institutional Research (AIR)
 Association of International Educators
 Association for Supervision and Curriculum Development
 Association of College Administration Professionals
 Association of Teacher Education Institutions Carolinas
 Association of Collegiate Registrars and Admissions Officers
 Central Intercollegiate Athletic Association (CIAA)
 College Entrance Examination Board Colleges and University Personnel
 Association Colleges and University Systems Exchange (CAUSE)
 Council for the Advancement and Support of Education (CASE) Council
 for Opportunity in Education
 Eastern Communication Association
 Intercollegiate Press
 Mathematics Association of America
 National Association for Equal Opportunity in Higher Education
 National Association of College and University Attorneys
 National Association of College and University Business Officers
 National Association of Foreign Student Advisors
 National Association of Industrial Technology (NAIT)
 National Association of Student Aid Administrators
 National Collegiate Athletic Association
 National Communication Association National
 Cooperative Education Association North
 American Association of Summer Sessions
 North Carolina Academy of Science
 North Carolina Association for Institutional Research North
 Carolina Association of Colleges for Teacher Education North
 Carolina Association of Student Aid Administrators North
 Carolina Association of Summer Sessions
 North Carolina Cooperative Education Association
 North Carolina Library Association North
 Carolina Student Information System
 Society for College and University Planning
 Society for Human Resource Management
 Southern Association of College and University Business Officers
 Southern Association of Libraries
 Southern Association of Student Aid Administrators
 Student Information System Users University
 Council on International Programs University of
 North Carolina Exchange Programs

Accreditations

Elizabeth City State University is accredited by the Southern Association of Colleges and Schools Commission on Colleges (SACSCOC) to award baccalaureate and masters degrees. Contact the Commission on Colleges at 1866 Southern Lane, Decatur, Georgia 30033-4098 or call 404-679-4500 for questions about the accreditation of Elizabeth City State University.

School of Education and Business

AACSB - Association to Advance Collegiate Schools of Business

School of Science, Aviation, Health and Technology

ATMAE - Association of Technology, Management, and Applied Engineering

School of Humanities and Social Sciences

CSWE - Council on Social Work Education

NASM - National Association of Schools of Music

School of Education and Business

CAEP - Council for the Accreditation of Educator Preparation

NCATE - National Council for Accreditation of Teacher Education

NCDPI - North Carolina Department of Public Instruction

Board of Trustees (2019 – 2020)

Jan King Robinson, Chairman

Lynne M. Bunch, Vice Chairman

Dr. Stephanie D.B. Johnson, Secretary

Harold Barnes

Jimmy Chambers, President SGA *Ex-officio*

Phyllis N. Bosomworth

Bishop Kim W. Brown

Andy Culpepper

Chris Evans

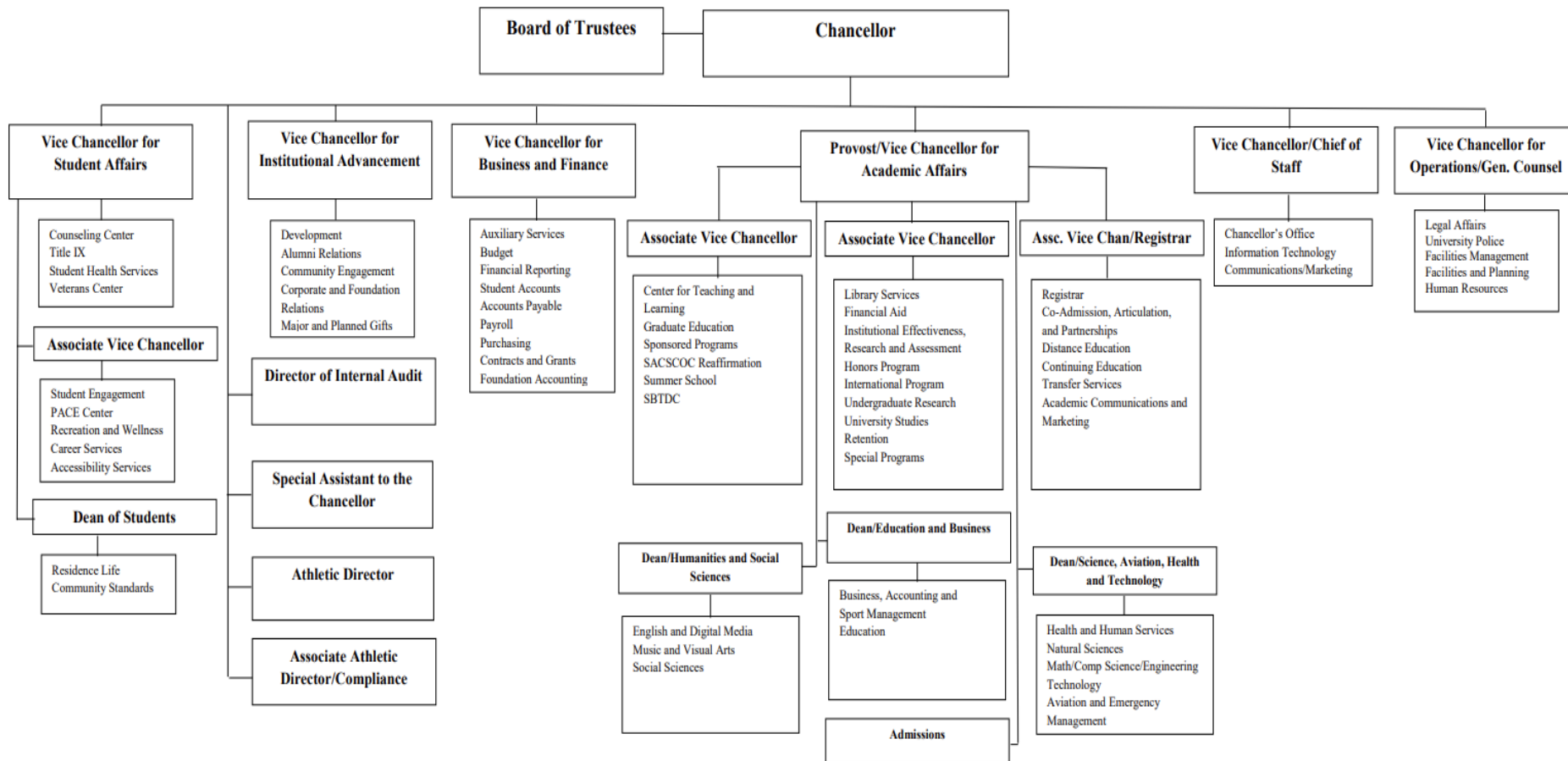
Tracy Swain

Paul Tine

Kennis E. Wilkins

Organizational Structure

Elizabeth City State University Organizational Structure



November 2019

Important Telephone Numbers

Division	(252) 335 Extension	Fax
Admission	3305	3537
Alumni	3224	3489
Athletics	3891	3627
Campus Police	3266	3689
Chancellor's Office	3228	3731
Community Outreach	3633	3735
Dining Services	3660	3817
Director of Financial Aid	3283	3716
Director of Housing & Residence Life	3712	3090
Enrollment Management	8722	8779
Graduate Programs	3947	3146
Honors Programs	3294	3792
Human Resources	3251	3415
Internal Auditor	3561	3411
Library	3586	3446
Registrar	3300	3729
University Relations & Marketing	3103	3769
Vice Chancellor of Academic Affairs Provost's Office	3291	3493
School of Humanities & Social Sciences	3945	3469
School of Education and Business	3485	3491
School of Science, Aviation, Health and Technology	3846	3760
Vice Chancellor of Business and Finance	3320	3539
Vice Chancellor of Institutional Advancement	3225	3542
Dean of Student Affairs	3277	3502

Application, Acceptances, & Enrollees

New Freshmen

Fall	Applied	Accepted		Enrolled	
	#	#	%	#	%
2015	1531	1071	69.9	268	25.0
2016	1550	840	54.2	203	24.2
2017	2695	1614	59.9	349	21.6
2018	2486	1474	59.0	418	28.4
2019	2549	1643	65.6	385	23.0

New Transfers

Fall	Applied	Accepted		Enrolled	
	#	#	%	#	%
2015	267	252	94.4	129	51.2
2016	175	121	69.1	71	41.5
2017	246	200	81.0	117	59.0
2018	392	315	80.4	184	58.4
2019	338	300	88.8	158	52.7

New Freshmen High School GPA

Fall	2015	2016	2017	2018	2019
1.00<1.49	0	0	0	0	0
1.50<1.99	1	0	0	0	0
2.00<2.49	31	6	6	11	12
2.50<2.99	100	72	119	151	146
3.00<3.49	79	63	137	139	129
3.50<4.00	53	53	86	114	94
Average GPA	3.07	3.25	3.21	3.20	3.14
Missing GPA	4	9	1	3	4

New Freshmen High School Class Rank

Fall		2015	2016	2017	2018	2019
# of New Freshmen (for those reporting class rank)	Top 20 th	14	32	56	72	53
	Second 20 th	34	60	110	109	99
	Third 20 th	89	65	92	120	103
	Fourth 20 th	70	23	53	65	68
	Bottom 20 th	44	5	14	11	60
Number of New Freshmen	# With Class Rank	251	184	325	377	383
	# Without Class Rank	17	19	24	41	2
	Total New Freshmen	268	203	349	418	385

Completed Applications & Acceptance from 21 NENC Counties

Northeastern North Carolina Counties	2017F		2018F		2019F	
	Applied	Accepted	Applied	Accepted	Applied	Accepted
Beaufort	40	18	25	15	27	13
Bertie	56	33	64	41	50	25
Camden	29	24	30	25	37	28
Chowan	69	40	69	37	54	32
Currituck	26	22	45	30	40	32
Dare	8	4	11	10	14	12
Edgecombe	67	31	60	29	78	37
Franklin	35	17	21	9	22	11
Gates	35	16	31	18	17	8
Halifax	112	63	118	60	123	66
Hertford	87	41	84	46	88	40
Hyde	1	1	5	3	3	2
Martin	0	0	0	0	1	0
Nash	66	28	56	26	61	27
Northampton	48	28	53	26	35	16
Pasquotank	231	160	278	203	238	183
Perquimans	51	39	35	24	29	18
Tyrrell	8	4	8	6	18	9
Vance	34	12	40	23	59	32
Warren	8	3	9	6	21	10
Washington	45	24	49	28	37	22
Total	1056	608	1091	665	1052	623
Other NC applications	1468	669	1303	687	1449	755
Out of state applications	639	294	759	370	589	316
Grand Total	3163	1571	3153	1722	3090	1694

Profile of Enrolled New Freshmen (Fall)

Enrollment Characteristics	2015	2016	2017	2018	2019
Headcount	268	203	349	418	385
FTE	266.50	202.50	343.50	417.50	383.30
Full-time	264	202	341	416	381
Part-time	4	1	8	2	4
Full-time %	98.51%	99.51%	97.71%	99.52%	98.96%
Part-time %	1.49%	0.49%	2.29%	0.48%	1.04%
Female	141	99	197	242	227
Male	127	104	152	176	158
Female %	52.61%	48.77%	56.45%	57.89%	58.96%
Male %	47.39%	51.23%	43.55%	42.11%	41.04%
In-State	236	189	319	299	307
Out-of-State	32	14	30	119	78
In-State %	88.06%	93.10%	91.40%	71.53%	79.74%
Out-of-State %	11.94%	6.90%	8.60%	28.47%	20.26%
American Indian or Alaskan Native	0	1	1	2	0
Asian	1	0	6	0	2
Black or African American	221	154	259	303	289
Hispanics	8	10	9	22	19
Native Hawaiian or Other Pacific Islander	0	0	2	0	0
Non-Resident Alien	0	1	0	2	1
Race and Ethnicity Unknown	21	5	13	11	8
Two or more races	1	8	17	25	23
White	16	24	42	53	43
American Indian or Alaskan Native %	0%	0.49%	0.29%	0.48%	0.52%
Asian %	0.37%	0%	1.72%	0%	0%
Black or African American %	82.46%	75.86%	74.21%	72.49%	75.06%
Hispanics %	2.99%	4.93%	2.58%	5.26%	4.94%
Native Hawaiian or Other Pacific Islander %	0%	0%	0.57%	0%	0%
Non-Resident Alien %	0%	0.49%	0%	0.48%	0.26%
Race and Ethnicity Unknown %	7.84%	2.46%	3.72%	2.63%	2.08%
Two or more races %	0.37%	3.94%	4.87%	5.98%	5.97%
White %	5.97%	11.82%	12.03%	12.68%	11.17%
Boarding	221	146	255	317	300
Commuter	47	57	94	101	85
Boarding %	82.46%	71.92%	73.07%	75.84%	72.25%
Commuter %	17.54%	28.08%	26.93%	24.16%	27.75%
Avg. SAT Read	414	427	434	425	320
Avg. SAT Math	425	435	439	419	329
Avg. SAT Writ	395	392	434	405	385
Avg. SAT Total	1,240	1,254	1,307	1,249	1,034

Profile of Enrolled New Freshmen (Spring)

Enrollment Characteristics	2016	2017	2018	2019	2020
Headcount	13	13	12	24	20
FTE	11.25	12.50	12.00	24.00	19.50
Full-time	10	12	12	24	19
Part-time	3	1	0	0	1
Full-time %	76.92%	92.31%	100%	100%	95.00%
Part-time %	23.08%	6.79%	0%	0%	5.00%
Female	7	8	8	13	12
Male	6	5	4	11	8
Female %	53.85%	61.54%	66.67%	54.17%	60.00%
Male %	46.15%	38.46%	33.33%	45.83%	40.00%
In-State	13	11	11	20	17
Out-of-State	0	2	1	4	3
In-State %	100.00%	84.62%	91.67%	83.33%	85.00%
Out-of-State %	0.00%	15.38%	8.33%	16.67%	15.00%
American Indian or Alaskan Native	0	0	0	0	0
Asian	0	0	0	0	0
Black or African American	6	9	10	15	12
Hispanics	1	1	1	1	3
Native Hawaiian or Other Pacific Islander	0	0	0	0	1
Non-Resident Alien	0	0	0	0	0
Race and Ethnicity Unknown	2	0	0	1	0
Two or more races	0	1	0	3	1
White	4	2	1	4	3
American Indian or Alaskan Native %	0.00%	0.00%	0.00%	0.00%	0.00%
Asian %	0.00%	0.00%	0.00%	0.00%	0.00%
Black or African American %	46.15%	69.23%	83.33%	62.50%	60.00%
Hispanics %	7.69%	7.69%	8.33%	4.17%	15.00%
Native Hawaiian or Other Pacific Islander %	0.00%	0.00%	0.00%	0.00%	5.00%
Non-Resident Alien %	0.00%	0.00%	0.00%	0.00%	0.00%
Race and Ethnicity Unknown %	15.38%	0.00%	0.00%	4.17%	0.00%
Two or more races %	0.00%	7.69%	0.00%	12.50%	5.00%
White %	30.77%	15.38%	8.33%	16.67%	15.00%
Boarding	3	6	9	15	14
Commuter	10	7	3	9	6
Boarding %	23.08%	46.15%	75.00%	62.50%	70.00%
Commuter %	76.92%	53.85%	25.00%	37.50%	30.00%
Avg. SAT Read	424	500	523	472	330
Avg. SAT Math	425	465	494	444	370
Avg. SAT Writ	390	385	390	402	
Avg. SAT Total	1,265	1,270	1,200	1,318	

Profile of Enrolled New Transfers (Fall)

Enrollment Characteristics	2015	2016	2017	2018	2019
Headcount	129	82	117	184	173
FTE	125.50	80.5	111.30	178.00	165.00
Full-time	122	78	106	169	155
Part-time	7	4	11	15	18
Full-time %	94.57%	95.12%	90.60%	91.85%	89.60%
Part-time %	5.43%	4.88%	9.40%	8.15%	10.40%
Female	64	49	69	110	96
Male	65	33	48	74	77
Female %	49.61%	59.76%	58.97%	59.78%	55.49%
Male %	50.39%	40.24%	41.03%	40.22%	44.51%
In-State	111	75	97	122	134
Out-of-State	18	7	20	62	39
In-State %	86.05%	91.46%	82.91%	66.30%	77.46%
Out-of-State %	13.95%	8.54%	17.09%	33.70%	22.54%
American Indian or Alaskan Native	1	1	0	0	1
Asian	1	1	1	0	1
Black or African American	63	34	63	118	93
Hispanics	7	1	7	7	6
Native Hawaiian or Other Pacific Islander	0	0	1	0	0
Non-Resident Alien	0	0	0	2	4
Race and Ethnicity Unknown	8	3	3	2	3
Two or more races	2	0	4	9	10
White	47	42	38	46	55
American Indian or Alaskan Native %	0.78%	1.22%	0%	0%	0.58%
Asian %	0.78%	1.22%	0.85%	0%	0.58%
Black or African American %	48.84%	41.46%	53.85%	64.13%	53.76%
Hispanics %	5.43%	0%	5.98%	3.80%	3.47%
Native Hawaiian or Other Pacific Islander %	0%	0%	0.85%	0%	0%
Non-Resident Alien %	0%	0%	0%	1.09%	2.31%
Race and Ethnicity Unknown %	6.20%	3.66%	2.56%	1.09%	1.73%
Two or more races %	1.55%	0%	3.42%	4.89%	5.78%
White %	36.43%	51.22%	32.48%	25.00%	31.79%
Boarding	50	22	36	73	59
Commuter	79	60	81	111	114
Boarding %	38.76%	26.83%	30.77%	39.67%	34.10%
Commuter %	61.24%	73.17%	69.23%	60.33%	65.90%
Avg. SAT Read	445	439	370	440	516
Avg. SAT Math	459	438	356	386	487
Avg. SAT Writ	426	433	341	420	354
Avg. SAT Total	1,332	1,310	1,067	1,246	1,357

Profile of Enrolled New Transfers (Spring)

Enrollment Characteristics	2016	2017	2018	2019	2020
Headcount	33	21	38	49	67
FTE	27.25	20.00	34.25	44.25	63.00
Full-time	24	18	31	39	57
Part-time	9	3	7	10	10
Full-time %	72.73%	85.71%	81.58%	79.59%	85.07%
Part-time %	27.27%	14.29%	18.42%	20.41%	14.93%
Female	18	6	23	29	42
Male	15	15	15	20	25
Female %	54.55%	28.57%	60.53%	59.18%	62.69%
Male %	45.45%	71.43%	39.47%	40.82%	37.31%
In-State	29	18	30	37	55
Out-of-State	4	3	8	12	12
In-State %	87.88%	85.71%	78.95%	75.51%	82.09%
Out-of-State %	12.12%	14.29%	21.05%	24.49%	17.91%
American Indian or Alaskan Native	0	0	0	1	1
Asian	1	0	0	0	0
Black or African American	14	7	19	21	32
Hispanics	1	7	2	2	5
Native Hawaiian or Other Pacific Islander	0	0	0	0	0
Non-Resident Alien	0	0	1	1	3
Race and Ethnicity Unknown	4	1	1	0	0
Two or more races	0	2	4	2	3
White	13	10	11	22	23
American Indian or Alaskan Native %	0.00%	0.00%	0.00%	2.04%	1.49%
Asian %	3.03%	0.00%	0.00%	0.00%	0.00%
Black or African American %	42.42%	33.33%	50.00%	42.86%	47.76%
Hispanics %	3.03%	33.33%	5.26%	4.08%	7.46%
Native Hawaiian or Other Pacific Islander %	0.00%	0.00%	0.00%	0.00%	0.00%
Non-Resident Alien %	0.00%	0.00%	2.63%	2.04%	4.48%
Race and Ethnicity Unknown %	12.12%	4.76%	2.63%	0.00%	0.00%
Two or more races %	0.00%	9.52%	10.53%	4.08%	4.48%
White %	39.39%	47.62%	28.95%	44.90%	34.33%
Boarding	14	8	11	10	11
Commuter	19	13	27	39	56
Boarding %	42.42%	38.10%	28.95%	20.41	16.42%
Commuter %	57.58%	61.90%	71.05%	79.59%	83.58%
Avg. SAT Read	453	365	407	417	470
Avg. SAT Math	450	495	422	390	433
Avg. SAT Writ	410	460	395	470	
Avg. SAT Total	1,313	1,410	1,223	1,380	

Profile of Enrolled Undergraduates (Fall)

Enrollment Characteristics	2015	2016	2017	2018	2019
Headcount	1,535	1,310	1,368	1,638	1,697
FTE	1,474.50	1,255.00	1,262.00	1,526.00	1,604.00
Full-time	1,405	1,197	1,179	1,425	1,518
Part-time	130	113	189	213	179
Full-time %	91.53%	91.37%	86.18%	87.00%	89.45%
Part-time %	8.47%	8.63%	13.82%	13.00%	10.55%
Female	876	734	758	940	1,005
Male	659	576	698	692	783
Female %	57.07%	56.03%	55.41%	57.39%	59.22%
Male %	42.93%	43.97%	44.59%	42.61%	40.78%
In-State	1,396	1,207	1,255	1,354	1,393
Out-of-State	139	103	113	284	304
In-State %	90.94%	92.14%	91.74%	82.66%	82.09%
Out-of-State %	9.06%	7.86%	8.26%	17.34%	17.91%
American Indian or Alaskan Native	4	6	5	8	6
Asian	4	3	12	10	11
Black or African American	1,129	946	939	1,140	1,175
Hispanics	36	33	45	68	72
Native Hawaiian or Other Pacific Islander	0	1	5	2	1
Non-Resident Alien	1	2	1	5	10
Race and Ethnicity Unknown	118	80	69	57	37
Two or more races	12	16	33	60	81
White	231	223	259	288	304
American Indian or Alaskan Native %	0.26%	0.46%	0.37%	0.49%	0.35%
Asian %	0.26%	0.23%	0.88%	0.61%	0.65%
Black or African American %	73.55%	72.21%	68.64%	69.60%	69.24%
Hispanics %	2.35%	2.52%	3.29%	4.15%	4.24%
Native Hawaiian or Other Pacific Islander %	0%	0.08%	0.37%	0.12%	0.06%
Non-Resident Alien %	0.07%	0.15%	0.07%	0.31%	0.59%
Race and Ethnicity Unknown %	7.69%	6.11%	5.04%	3.48%	2.18%
Two or more races %	0.78%	1.22%	2.41%	3.66%	4.77%
White %	15.05%	17.02%	18.93%	17.58%	17.91%
Boarding	877	608	694	841	900
Commuter	658	702	674	797	797
Boarding %	57.13%	46.41%	50.73%	51.34%	53.03%
Commuter %	42.87%	53.59%	49.27%	48.66%	46.97%
Avg. SAT Read	418	429	425	425	225
Avg. SAT Math	428	434	428	419	232
Avg. SAT Writ	401	397	399	379	380
Avg. SAT Total	1,250	1,260	1,252	1,223	837
Avg. ECSU GPA	2.82	2.80	2.81	2.77	2.86
Avg. Age	23.6	24.1	22.9	22.7	22.5

Profile of Enrolled Undergraduates (Spring)

Enrollment Characteristics	2016	2017	2018	2019	2020
Headcount	1,469	1,172	1,239	1,454	1,594
FTE	1,381.25	1,087.00	1,128.00	1,356.00	1,486.00
Full-time	1,309	1,010	1,041	1,270	1,387
Part-time	160	162	198	184	207
Full-time %	89.11%	86.18%	84.02%	87.35%	87.01%
Part-time %	10.89%	13.82%	15.98%	12.65%	12.99%
Female	838	640	696	849	919
Male	631	532	543	605	675
Female %	57.05%	54.61%	56.17%	58.39%	57.65%
Male %	42.95%	45.39%	43.83%	41.61%	42.35%
In-State	1,346	1,062	1,138	1,207	1,321
Out-of-State	123	110	101	247	273
In-State %	91.63%	90.61%	91.85%	83.01%	82.87%
Out-of-State %	8.37%	9.39%	8.15%	16.99%	17.13%
American Indian or Alaskan Native	4	5	5	7	4
Asian	4	4	12	11	10
Black or African American	600	830	820	997	1,088
Hispanics	31	32	47	61	69
Native Hawaiian or Other Pacific Islander	0	2	3	1	2
Non-Resident Alien	2	1	1	5	13
Race and Ethnicity Unknown	661	66	64	44	37
Two or more races	9	19	32	60	82
White	158	213	255	268	289
American Indian or Alaskan Native %	0.27%	0.43%	0.4%	0.48%	0.25%
Asian %	0.27%	0.34%	0.97%	0.76%	0.63%
Black or African American %	40.84%	70.82%	66.18%	68.57%	68.26%
Hispanics %	2.11%	2.73%	3.79%	4.20%	4.33%
Native Hawaiian or Other Pacific Islander %	0.00%	0.17%	0.24%	0.07%	0.13%
Non-Resident Alien %	0.14%	0.09%	0.08%	0.34%	0.82%
Race and Ethnicity Unknown %	45.00%	5.63%	5.17%	3.03%	2.32%
Two or more races %	0.61%	1.62%	2.58%	4.13%	5.14%
White %	10.76%	18.17%	20.58%	18.43%	18.13%
Boarding	789	603	596	752	828
Commuter	680	569	643	702	766
Boarding %	53.71%	51.45%	48.10%	51.72%	51.94%
Commuter %	46.29%	48.55%	51.90%	48.28%	48.06%
Avg. SAT Read	420	421	428	411	406
Avg. SAT Math	431	431	431	404	419
Avg. SAT Writ	401	397	394	368	411
Avg. SAT Total	1,254	1,250	1,220	1,168	1,248
Avg. ECSU GPA	2.80	2.79	2.81	2.79	2.83
Avg. Age	24.3	23.9	22.8	22.7	22.7

Profile of Enrolled Graduates (Fall)

Enrollment Characteristics	2015	2016	2017	2018	2019
Headcount	50	47	43	40	75
FTE	31.75	36.75	36.00	31.00	62.50
Full-time	1	11	16	8	26
Part-time	49	36	27	32	49
Full-time %	2.00%	23.40%	37.21%	20.00%	34.67%
Part-time %	98.00%	76.60%	62.79%	80.00%	65.33%
Female	31	36	34	30	57
Male	19	11	9	10	18
Female %	62.00%	76.60%	79.07%	75.00%	76.00%
Male %	38.00%	23.40%	20.93%	25.00%	24.00%
In-State	49	43	40	38	70
Out-of-State	1	4	3	2	5
In-State %	98.00%	91.49%	93.02%	95.00%	93.33%
Out-of-State %	2.00%	8.51%	6.98%	5.00%	6.67%
Asian	0	0	0	0	0
Black or African American	33	30	24	20	39
Hispanics	1	1	1	0	3
Race and Ethnicity Unknown	4	5	9	14	19
White	12	0	9	6	14
Asian %	0%	0%	0%	0%	0%
Black or African American %	66.00%	63.83%	55.81%	50.00%	52.00%
Hispanics %	2.00%	2.13%	2.33%	0%	4.00%
Race and Ethnicity Unknown %	8.00%	10.64%	20.93%	35.00%	25.33%
White %	24.00%	23.40%	20.93%	15.00%	18.67%
Boarding	0	8	10	12	8
Commuter	50	39	33	28	67
Boarding %	0%	17.02%	23.26%	30.00%	10.67%
Commuter %	100.00%	82.98%	76.74%	70.00%	89.33%
Avg. ECSU GPA	3.72	3.66	3.60	3.75	3.60
Avg. Age	37.1	33.7	33.7	33.2	33.3

Profile of Enrolled Graduates (Spring)

Enrollment Characteristics	2016	2017	2018	2019	2020
Headcount	33	43	39	54	76
FTE	25.25	33.75	29.50	44.50	66.50
Full-time	4	8	3	17	41
Part-time	29	35	36	37	35
Full-time %	12.12%	18.60%	7.69%	31.48%	53.95%
Part-time %	87.88%	81.40%	92.31%	68.52%	46.05%
Female	22	31	31	39	58
Male	11	12	8	15	18
Female %	66.67%	72.09%	79.49%	72.22%	76.32%
Male %	33.33%	27.91%	20.51%	27.78%	23.68%
In-State	33	39	36	51	71
Out-of-State	0	4	3	3	5
In-State %	100.00%	90.70%	92.31%	94.44%	93.42%
Out-of-State %	0.00%	9.30%	7.69%	5.56%	6.58%
American Indian or Alaskan Native	0	0	0	0	0
Asian	0	0	0	0	0
Black or African American	2	23	21	26	36
Hispanics	1	1	0	1	3
Non-Resident Alien	0	0	0	2	0
Race and Ethnicity Unknown	27	8	7	19	20
White	3	11	11	6	17
American Indian or Alaskan Native %	0.00%	0.00%	0.00%	0.00%	0.00%
Asian %	0.00%	0.00%	0.00%	0.00%	0.00%
Black or African American %	6.06%	53.49%	53.85%	48.15%	47.37%
Hispanics %	3.03%	2.33%	0%	1.85%	3.95%
Non-Resident Alien %	0%	0%	0%	3.70%	0%
Race and Ethnicity Unknown %	81.82%	18.60%	17.95%	35.19%	26.32%
White %	9.09%	25.58%	28.21%	11.11%	22.37%
Boarding	0	7	6	13	8
Commuter	33	36	33	41	68
Boarding %	0.00%	16.28%	15.38%	24.07%	10.53%
Commuter %	100.00%	83.72%	84.62%	75.93%	89.47%
Avg. ECSU GPA	3.58	3.42	3.70	3.47	3.52
Avg. Age	36.7	33.6	33.9	33.3	33.3

All Students by Classification (Fall and Spring)

	2015F	2016F	2017F	2018F	2019F
New Freshman	268	203	349	418	385
Other Freshman	127	108	96	160	180
Sophomores	312	285	258	350	424
Juniors	325	257	241	287	331
Seniors	473	435	357	345	313
Unclassified	30	22	67	78	65
Graduates	50	47	43	40	74
TOTAL	1585	1357	1411	1678	1772

	2016S	2017S	2018S	2019S	2020S
New Freshman	12	13	23	23	25
Other Freshman	286	211	311	385	354
Sophomores	282	237	225	339	416
Juniors	312	246	238	314	388
Seniors	501	427	356	325	342
Unclassified	69	48	88	68	69
Graduates	32	43	37	54	76
TOTAL	1496	1215	1,278	1,508	1,670

All Students by Majors Fall

Department	Major	2015	2016	2017	2018	2019
Aviation and Emergency Management	Aviation Science	50	47	54	68	98
	Emergency Management				4	10
	Unmanned Aircraft Systems					1
	Total	50	47	54	72	109
Business Accounting and Sport Management	Accounting	44	36	31	36	35
	Business Administration	180	166	165	196	205
	Sport Management	28	29	47	52	58
	Total	252	231	243	284	298
Education	Birth through Kindergarten	34	35	32	30	31
	Elementary Education	48	54	57	66	58
	Elementary Education (M)	2	3	3	3	36
	Middle Grades Education	13	11	5		
	School Administration	24	15	18	17	18
	Special Education, General	17	9	6	12	15
	Total	138	127	121	128	158
English and Digital Media	Communication Studies	49	42	37	40	23
	Digital Media Arts					11
	English	33	31	26	25	29
	Total	82	73	63	65	63
Health and Human Studies	Kinesiology			5	80	104
	Pharmaceutical Science	61	48	34	42	40
	Physical Education and Health	128	101	91	19	3
	Psychology	71	71	80	104	97
	Social Work	69	47	66	82	107
	Total	329	267	276	327	351
Mathematics Computer Science and Engineering Technology	Computer Information Science	68	52	59	56	52
	Engineering Technology	41	41	47	53	57
	Industrial Technology	6	5	2		
	Mathematics	25	18	17	17	11
	Mathematics (G)	11	11	9	11	13
	Total	151	127	134	137	133
Music and Visual Arts	Art	11	1			
	Graphic Design	36	30	36	43	43
	Music	50	36	31	45	42
	Total	97	67	67	88	85
Natural Sciences	Biology	133	139	149	170	160
	Chemistry	20	9	15	15	13
	Geology	1				

Department	Major	2015	2016	2017	2018	2019
	Marine Environmental Science	1				
	Physics	3	2			
	Total	158	150	164	185	173
Social Sciences	Criminal Justice	158	126	116	133	156
	History	20	15	21	31	31
	Homeland Security					1
	Interdisciplinary Studies			2	64	81
	Political Science	12	6	4	1	
	Sociology	47	34	27	17	9
	Total	237	181	170	246	278
Undeclared/Special/Certification	Certification	19	19	7	13	7
	Continuing Education				1	
	General Studies	2	1			
	Special	3	14	53	52	42
	Special Graduate					
	Transient Study			1		
	UNC Exchange		3	5	19	22
	Undecided	69	50	53	61	53
Total	93	87	119	146	124	
Grand Total		1587	1357	1411	1678	1772

Enrollment by State Fall 2015-2019

State	2015	2016	2017	2018	2019
Alabama			1	2	3
Alaska				1	
California	4	4	2	5	1
Colorado					
Connecticut	3	2	0	2	4
Delaware	3	2	1	5	5
District of Columbia	27	20	8	10	11
Florida	4	4	5	13	15
Foreign Countries	1		1	1	9
Georgia	3	2	4	4	10
Hawaii					
Illinois	1	1	0	2	1
Indiana	1	1			
Kentucky			0	2	2
Louisiana			0	0	1
Maryland	22	17	16	27	35
Massachusetts	1				
Michigan			0	1	3
Mississippi		1	2	0	0
Nevada			2	2	2
New Jersey	7	9	6	11	10
New York	6	7	5	8	9
North Carolina	1,439	1,240	1,308	1,442	1,504
Ohio	2	1	0	2	2
Pennsylvania	3		1	3	5
South Carolina	1	2	3	6	6
Tennessee			1		
Texas	1	1	2	2	1
Unknown/Army		6	3	4	1
Vermont					
Virginia	50	36	39	122	131
Washington		1	1	1	1
Grand Total	1,587	1,357	1,411	1,678	1,772

Enrollment by Counties for North Carolina

County	2015	2016	2017	2018	2019
ALAMANCE	8	6	3	6	11
ALEXANDER					
ASHE				1	
BEAUFORT	17	14	18	18	19
BERTIE	50	38	43	52	43
BLADEN	2	1	3	2	3
BRUNSWICK	1	1	1	5	2
BUNCOMBE	1	1	2	3	2
BURKE			1	1	3
CABARRUS	6	6	6	3	9
CALDWELL		1	1	0	2
CAMDEN	60	45	48	51	50
CARTERET	3	3	4	3	3
CASWELL	2	2	1	0	1
CATAWBA				3	1
CHATHAM	5	1	2	3	2
CHOWAN	38	36	53	45	48
CLEVELAND					3
COLUMBUS	3	5	2	2	3
CRAVEN	24	15	11	9	13
CUMBERLAND	27	19	16	19	19
CURRITUCK	42	38	35	36	61
DARE	15	13	7	10	16
DAVIDSON	4	4	6	3	5
DAVIE	1		0	2	1
DUPLIN		1	3	7	4
DURHAM	31	29	20	20	22
EDGECOMBE	29	19	23	28	36
FORSYTH	18	17	16	12	16
FRANKLIN	8	8	8	10	12
GASTON	5	3	2	5	7
GATES	33	29	26	23	23
GRANVILLE	5	4	4	5	4
GREENE	3	1	2	3	1
GUILFORD	29	19	28	31	35
HALIFAX	63	58	60	67	75
HARNETT	8	7	6	6	7
HAYWOOD	1				
HERTFORD	74	72	69	72	56
HOKE	6	5	4	7	6
HYDE	1	1	2	4	4
IREDELL	1	1	3	2	4
JACKSON			0	1	1

County	2015	2016	2017	2018	2019
JOHNSTON	11	6	6	8	10
JONES	2	2	1	4	3
LEE	6	5	6	2	3
LENOIR	5	5	3	6	10
LINCOLN	1		0	2	1
MACON			1	1	1
MARTIN	28	21	12	7	5
MCDOWELL		4	8	12	19
MECKLENBURG	64	43	47	47	51
MONTGOMERY			0	1	1
MOORE	3	3	1		
NASH	20	21	17	15	19
NEW HANOVER	11	8	5	3	2
NONE			13	16	9
NORTHAMPTON	22	23	24	30	26
ONSLow	11	14	18	23	23
ORANGE	3	2	2	1	2
PAMLICO	3	1	2	4	6
PASQUOTANK	336	269	301	350	364
PENDER		1	2	3	2
PERQUIMANS	59	53	61	63	45
PERSON		1			1
PITT	32	23	25	27	50
POLK					
RANDOLPH	1			1	1
RICHMOND	2	1	2	1	2
ROBESON	6	3	2	5	6
ROCKINGHAM	5	2	3	3	2
ROWAN	5	2	2	2	2
RUTHERFORD	1	1		1	
SAMPSON	4	2	1	1	1
SCOTLAND	3	5	4	2	3
STANLY	5	1	2	2	4
SURRY			1	1	1
TYRRELL	7	10	11	11	12
UNION	9	8	13	10	9
VANCE	10	5	3	7	12
WAKE	59	48	58	78	84
WARREN	11	11	8	5	7
WASHINGTON	40	34	32	38	27
WAYNE	15	15	13	15	19
WILKES			1	1	1
WILSON	21	16	19	14	12
YADKIN					
Grand Total	1445	1192	1269	1406	1492

**Enrollment from 21 *NENC Counties
(New Freshmen)**

Northeastern North Carolina Counties	2015	2016	2017	2018	2019
BEAUFORT	6	3	9	5	
BERTIE	15		13	13	6
CAMDEN	4	6	10	5	10
CHOWAN	5	4	15	9	10
CURRITUCK	4	3	8	10	10
DARE				1	3
EDGECOMBE	11	1	6	9	12
FRANKLIN	2	1	3	3	5
GATES	2	4	10	7	2
HALIFAX	15	8	13	16	11
HERTFORD	10	16	15	11	6
HYDE			2	3	1
MARTIN	6	1		2	8
NASH	4	5	5	7	6
NORTHAMPTON	4	6	7	8	3
PASQUOTANK	35	34	52	70	56
PERQUIMANS	7	1	13	5	6
TYRRELL	1	3	1	1	
VANCE	3	1	3	3	4
WARREN	2	2		1	2
WASHINGTON	6	6	4	11	7
# of NENC students	142	105	189	200	168
Total New Freshman Enrollment	268	203	349	418	385
% of NENC Students	53.0	52.0	54.2	47.9	43.6
Total In-State New Freshman	236	172	319	299	307
% of In-State Students from NENC	60.2	61.0	59.2	66.9	54.7

**Enrollment from 21 *NENC Counties
(New Transfers)**

Northeastern North Carolina Counties	2015	2016	2017	2018	2019
BEAUFORT	1			1	4
BERTIE	1	3	5	8	2
CAMDEN	10	2	7	7	10
CHOWAN	6	4	1	5	3
CURRITUCK	6	3	5	5	12
DARE	4	4	1	5	3
EDGECOMBE		1	2	3	2
FRANKLIN	1		1		
GATES	4	3	1	2	
HALIFAX	2	2	12	8	11
HERTFORD	4	4	9	5	6
MARTIN	2	1	3	2	1
NASH		2	2		2
NORTHAMPTON	2	2	3	3	2
PASQUOTANK	30	18	26	31	30
PERQUIMANS	6	6	3	2	7
TYRRELL	2			1	3
VANCE				2	1
WARREN	1				1
WASHINGTON	4	1	2	1	1
# of NENC students	86	56	83	91	101
Total New Transfer enrollment	129	84	117	184	173
% of NENC Students	66.7	66.7	70.9	49.5	58.4
Total In-State New Transfers	111	67	97	122	134
% of In-State Students from	77.5	83.6	85.6	74.6	75.4

**Enrollment from 21 *NENC Counties
(Undergraduates)**

Northeastern North Carolina Counties	2015	2016	2017	2018	2019
BEAUFORT	16	12	17	18	19
BERTIE	49	37	43	56	41
CAMDEN	58	43	48	50	53
CHOWAN	36	35	54	46	49
CURRITUCK	38	34	34	35	54
DARE	13	12	7	9	16
EDGECOMBE	28	19	23	26	32
FRANKLIN	8	8	9	11	14
GATES	32	29	27	23	22
HALIFAX	59	57	59	67	71
HERTFORD	70	71	68	70	54
HYDE	1	1	2	4	4
MARTIN	27	21	16	17	20
NASH	18	21	17	16	20
NORTHAMPTON	22	23	25	32	29
PASQUOTANK	303	259	301	349	358
PERQUIMANS	54	52	58	58	43
TYRRELL	7	10	10	11	10
VANCE	10	5	3	8	13
WARREN	10	11	9	6	8
WASHINGTON	37	33	31	38	27
# of NENC students	896	793	861	950	957
Total Undergrad enrollment	1,535	1,357	1,368	1,638	1,697
% of NENC Students	58.4	58.4	62.9	58.0	56.4
Total In-State Undergrad	1,396	1,165	1,196	1,281	1,330
% of In-State Students from NENC	64.2	68.1	72.0	74.2	72.0

Summer School Profile of Enrolled Students (Undergraduates)

Enrollment Characteristics	2015		2016	2017	2018	2019
	Session I	Session II	Session	Session	Session	Session
Headcount	408	456	535	290	284	404
FTE	233.40	243.56	281.80	138.50	128.50	208.5
Full-time	28	25	61	12	9	45
Part-time	380	431	474	278	275	359
Full-time %	6.86%	5.48%	11.40%	4.14%	3.17%	11.14%
Part-time %	93.14%	94.52%	88.60%	95.86%	96.83%	88.86%
Female	257	270	337	167	180	261
Male	151	186	198	123	104	143
Female %	62.99%	59.21%	62.99%	57.59%	63.38%	64.60%
Male %	37.01%	40.79%	37.01%	42.41%	36.62%	35.40%
In-State	379	431	510	275	259	380
Out-of-State	29	25	25	15	25	24
In-State %	92.89%	94.52%	95.33%	94.83%	91.20%	94.06%
Out-of-State %	7.11%	5.48%	4.67%	5.17%	8.80%	5.94%
American Indian or Alaskan Native	2	2	3	3	1	2
Asian	1	0	2	2	1	4
Black or African American	312	333	391	209	200	267
Hispanics	6	7	11	6	10	18
Native Hawaiian or Other Pacific Islander	0	0	2	2	2	0
Non-Resident Alien	0	0	1	0	0	1
Race and Ethnicity Unknown	24	36	32	15	11	9
Two or more races	5	7	5	3	7	14
White	58	71	88	50	52	89
American Indian or Alaskan Native %	0.49%	0.44%	0.56%	1.03%	0.35%	0.50%
Asian %	0.25%	0.00%	0.37%	0.69%	0.35%	0.99%
Black or African American %	76.47%	73.03%	73.08%	72.07%	70.42%	66.09%
Hispanics %	1.47%	1.54%	2.06%	2.07%	3.52%	4.46%
Native Hawaiian or Other Pacific Islander %	0.00%	0.00%	0.37%	0.69%	0.70%	0.0%
Non-Resident Alien %	0	0.00%	0.19%	0.0%	0.0%	0.25%
Race and Ethnicity Unknown %	5.88%	7.89%	5.98%	5.17%	3.87%	2.23%
Two or more races %	1.23%	1.54%	0.93%	1.03%	2.46%	3.47%
White %	14.22%	15.57%	16.45%	17.24%	18.31%	22.03%
Avg. SAT Read	480	423	418	416	421	418
Avg. SAT Math	540	435	430	435	427	420
Avg. SAT Writ	396	403	398			
Avg. SAT Total	1,480	1,247	1,247			
Avg. ECSU GPA	2.87	2.78	2.75	2.80	2.74	2.85
Avg. Age	26.1	25.4	25.6	24.6	25.2	25.1

Summer School Profile of Enrolled Students (Graduates)

Enrollment Characteristics	2015		2016	2017	2018	2019
	Session I	Session II	Session	Session	Session	Session
Headcount	26	25	19	20	14	35
FTE	19.20	13.83	14.00	13.25	10.25	27.75
Full-time	3	2	2	0	1	11
Part-time	23	23	17	20	13	24
Full-time %	11.54%	8.00%	10.53%	0.0%	7.14%	31.43%
Part-time %	88.46%	92.00%	89.47%	100%	92.86%	68.57%
Female	14	13	12	17	12	25
Male	12	12	7	3	2	10
Female %	53.85%	52.00%	63.16%	85.00%	85.71%	71.43%
Male %	46.15%	48.00%	36.84%	15.00%	14.29%	28.57%
In-State	25	25	17	20	14	33
Out-of-State	1	0	2	0	0	2
In-State %	96.15%	100.00%	89.47%	100%	100%	94.29%
Out-of-State %	3.85%	0.00%	10.53%	0%	0%	5.71%
American Indian or Alaskan Native	0	0	0	0	0	0
Asian	0	0	0	0	0	0
Black or African American	19	19	15	7	8	18
Hispanics	0	0	0	0	0	0
Native Hawaiian or Other Pacific Islander	0	0	0	0	0	0
Non-Resident Alien	0	0	0	0	0	1
Race and Ethnicity Unknown	2	1	1	7	1	9
Two or more races	0	0	0	0	0	0
White	5	5	3	6	5	7
American Indian or Alaskan Native	0.00%	0.00%	0.00%	0.00%	0.00%	0.00%
Asian %	0.00%	0.00%	0.00%	0.00%	0.00%	0.00%
Black or African American %	73.08%	76.00%	78.95%	35.00%	57.14%	51.43%
Hispanics %	0.00%	0.00%	0.00%	0.00%	0.00%	0.00%
Native Hawaiian or Other Pacific Islander %	0.00%	0.00%	0.00%	0.00%	0.00%	0.00%
Non-Resident Alien %	0.00%	0.00%	0.00%	0%	0%	2.86%
Race and Ethnicity Unknown %	7.69%	4.00%	5.26%	35.00%	7.14%	25.71%
Two or more races %	0.00%	0.00%	0.00%	0.00%	0.00%	0.00%
White %	19.23%	20.00%	15.79%	30.00%	35.71%	20.00%
Avg. ECSU GPA	3.77	3.79	3.51	3.85	3.86	3.66
Avg. Age	37.1	37.8	32.3	37.6	34.6	34.4

Headcount by Total Student Credit Hours (Undergraduates)

Credit Hrs	2015		2016		2017		2018		2019	
	# of Students	# of Hours	# of Students	# of Hours	# of Students	# of Hours	# of Students	# of Hours	# of Students	# of Hours
1	2	2	1	1	1	1			1	1
2	1	2	1	2	6	12	5	10	2	4
3	23	69	29	87	58	174	65	195	55	165
4	1	4			4	16	6	24	4	16
5	1	5	1	5	17	85	10	50	3	15
6	51	306	42	252	63	378	61	366	68	408
7	3	21	5	35	15	105	15	105	20	140
8	2	16	6	48	4	32	8	64	2	16
9	31	279	21	189	26	234	40	360	37	333
10	10	100	11	110	16	160	14	140	14	140
11	5	55	8	88	7	77	8	88	7	77
12	257	3,084	221	2,652	172	2,064	194	2,328	182	2,184
13	92	1,196	66	858	65	845	75	975	91	1,183
14	114	1,596	93	1,302	55	770	86	1,204	110	1,540
15	408	6,120	328	4,920	397	5,955	539	8,085	605	9,075
16	213	3,408	178	2,848	222	3,552	257	4,112	298	4,768
17	133	2,261	130	2,210	111	1,887	94	1,598	78	1,326
18	158	2,844	164	2,952	140	2,520	156	2,808	149	2,682
19	12	228	4	76	6	114	12	228	4	76
20	7	140	4	80	3	60	3	60		
21	10	210	6	126	6	126	8	168	5	105
22	1	22	1	22	2	44				
23			1	23			1	23		
24			1	24						
Grand Total	1,535	21,968	1,322	18,910	1,396	19,211	1,657	22,991	1,735	24,254

**Headcount by Total Student Credit Hours
(Graduate Students)**

Credit Hrs	2015		2016		2017		2018		2019	
	# of Students	# of Hours	# of Students	# of Hours	# of Students	# of Hours	# of Students	# of Hours	# of Students	# of Hours
1	2.0	2.0					1	1		
2										
3	19.0	57.0	2	6					1	3
4			1	4						
5	1.0	5.0								
6	14.0	84.0	15	90	4	24	5	30	14	84
7	13.0	91.0	11	77	7	49	7	49	10	70
9	1.0	9.0	6	54	4	36	7	63	5	45
10							1	10		
12										
13										
15									7	84
Grand Total	50.0	248.0	35	231.0	15	109	21	156	37	286

Student Credit Hours by Category & Residence Status

Residence	Category	2015	2016	2017	2018	2019
In-State	Extension Crd Hrs Enrolled	3,747	3,394	2,235	2,864	3,978
	Regular Crdt Hrs Enrolled	16,446	14,159	15,476	16,145	16,073
	Total Credit Hrs	20,193	17,553	17,711	19,009	20,051
Out-of-State	Extension Crd Hrs Enrolled	336	253	139	415	531
	Regular Crdt Hrs Enrolled	1,687	1,335	1,470	3,720	3,958
	Total Credit Hrs	2,023	1,588	1,609	4,135	4,489
Grand Total	Extension Crd Hrs Enrolled	4,083	3,647	2,374	3,279	4,509
	Regular Crdt Hrs Enrolled	18,133	15,494	16,946	19,865	20,031
	Total Credit Hrs	22,216	19,141	19,320	23,144	24,540

Degrees Conferred by Departments

Department	Level	Major	2016-17		2017-18		2018-19	
			Fall 2016	Spring 2017	Fall 2017	Spring 2018	Fall 2018	Spring 2019
Aviation Science and Emergency Management	Undergraduate	Aviation Science	2	5		3	2	7
		Emergency Management						
Business Accounting and Sport Management	Undergraduate	Accounting	5	5		5	4	3
		Business Administration	17	18	12	14	13	14
		Sport Management	2	3	7	5	2	5
Education	Graduate	Elementary Education (M)	1				2	1
		School Administration	5	3		8	2	7
	Undergraduate	Birth through Kindergarten	4	7	3	7	3	5
		Elementary Education	3	8	3	4		6
		Middle Grades Education		1	1	1		
		Special Education, General	2	3				
English and Digital Media	Undergraduate	Communication Studies	4	7	1	2	3	5
		English	4	5	3	5	2	2
Health and Human Studies	Undergraduate	Kinesiology				2	2	3
		Pharmaceutical Science	5	6	4	4	4	1
		Physical Education and Health	9	7	5	6		1
		Psychology	2	2	4	5	5	5
		Social Work		12		9	5	14
Mathematics, Computer Science and Engineering Technology	Graduate	Mathematics (G)		4	1			3
	Undergraduate	Computer Information Science	2	8	5	9	5	7
		Engineering Technology	2	2		5	5	6
		Industrial Technology	2	1			1	
		Mathematics	2	4	3	3	1	3
Music and Visual Arts	Undergraduate	Art						
		Graphic Design	2	3	1	6	1	8

Department	Level	Major	2016-17		2017-18		2018-19	
			Fall 2016	Spring 2017	Fall 2017	Spring 2018	Fall 2018	Spring 2019
		Music	3	6	6	3	1	7
Natural Sciences	Graduate	Biology	3	1	1	7	1	2
	Undergraduate	Biology	9	6	9	7	8	2
		Chemistry	3			1	1	2
		Geology						
		Marine Environmental Science						
Social Sciences	Undergraduate	Criminal Justice	11	20	16	18	8	15
		History		5	3	8	1	2
		Interdisciplinary Studies			4	9	8	11
		Political Science		1	1		1	
		Sociology	10	8	3	10	2	4
Grand Total			114	161	96	166	93	151

Characteristics of Degrees Conferred

Enrollment Characteristics	2014-15		2015-16		2016-17		2017-18		2018-19	
	#	%	#	%	#	%	#	%	#	%
Headcount	439	100	327	100	275	100	262	100	244	100
Men	151	34.4	113	34.6	96	34.9	105	40.1	103	42.2
Women	288	65.6	214	65.4	179	65.1	157	59.9	141	57.8
In-State	389	88.6	302	92.4	258	93.8	243	92.8	227	93.0
Out-of-State	50	11.4	25	7.6	17	6.2	19	7.3	17	7.0
Non-Resident Alien	2	0.5	0	0.0	0	0	1	0.4	0	0
Unknown	47	10.7	39	11.9	23	8.4	23	8.8	12	4.9
Hispanic	3	0.7	1	0.3	5	1.8	5	1.9	5	2.1
American Indian	1	0.2	0	0.0	0	0	1	0.4	4	1.6
Asian	3	0.7	1	0.3	0	0			2	0.8
Black	314	71.5	236	72.2	195	70.9	180	68.7	167	68.4
White	67	15.3	49	15.0	50	18.2	50	19.1	51	20.9
Two or More races	2	0.5	1	0.3	2	0.7	2	0.8	3	1.2
Average GPA	3.04		3.13		3.12		3.03		3.12	

Retention Rates

Rates in the following chart reflect the cohort of first-time full-time freshmen (2005 - 2014)

Year of Entry	Number of Freshmen	Number of Year(s) After Entry					
		1	2	3	4	5	6
Retention Rates							
2010	576	77.3	58.2	47.9	24.8	5.7	2.9
2011	387	79.1	55.6	49.1	19.9	5.7	3.8
2012	523	72.5	56.0	49.1	25.6	8.9	3.4
2013	322	68.3	53.4	48.9	27.8	8.4	2.2
2014	204	73.5	57.4	49.8	29.2	6.2	2.4
2015	268	67.8	49.6	48.1	25.8	11.2	.
2016	203	73.9	58.1	46.1	22.3	.	.
2017	349	72.5	61.9	51.0	.	.	.
2018	418	70.6	57.2
2019	385	75.6

Graduation Rates

Rates in the following chart reflect the cohort of first-time full-time freshmen (2005- 2014)

Year of Entry	Number of Freshmen	Number of Year(s) After Entry					
		1	2	3	4	5	6
Graduation Rates							
2010	576	0	0	0.3	16.3	33.3	36.6
2011	387	0	0	0.5	22.7	33.2	37.5
2012	523	0	0	1.1	21.1	34.9	42.4
2013	322	0	0	0.9	18.3	33.9	38.4
2014	204	0	0	3.8	21.5	38.7	44.9
2015	268	0	0	0.4	19.4	33.6	.
2016	203	0	0	0.5	24.3	.	.
2017	349	0	0	1.7	.	.	.
2018	418	0	0
2019	385	0

Full-Time Faculty & Staff by Occupational Activity

Categories	2017	2018	2019
Building and grounds cleaning and maintenance	25	31	30
Business and Financial Operations	24	26	28
Community and Social Service	1	2	2
Computer and Mathematical	16	15	15
Construction and extraction	9	9	5
First-Line Mgr Food Prep, Serv	1	1	
Healthcare practitioners and technical	4	3	2
Installation, maintenance and repair	8	7	4
Instructional Coordinators	10	9	10
Legal	3	2	2
Librarians	4	3	4
Life, Physical and Social Science	2	10	15
Management	46	53	54
Miscellaneous Education, Training and Library Workers	15	15	15
Office and administrative support	41	42	42
Personal care service	3	3	3
Postsecondary Teacher	96	115	123
Pre-school, primary, secondary and special education teacher	26	2	3
Protective service	13	15	15
Sales and related	2	2	2
Transportation and material moving	1	1	2
Grand Total	359	379	388

Source: Elizabeth City State University Office of Human Resources (HR DataMart)

Full-Time Instructional Faculty by Gender

	2014	2015	2016	2017	2018	2019
Men	76	63	63	65	70	71
Women	50	40	37	31	45	52
Total	126	103	100	96	115	123

Full-Time Instructional Faculty by Highest Earned Degree

	2014	2015	2016	2017	2018	2019
Doctorate	76	83	82	79	88	84
Specialist/JD	1	0	0	0	0	1
Master's	49	20	18	17	25	33
Bachelor's	0	0	0	0	2	4
Other	0	0	0	0	0	1
Total	126	103	100	96	115	123

Full-Time Instructional Faculty by Academic Rank

	2014	2015	2016	2017	2018	2019
Professor	43	39	35	31	29	26
Associate Professor	29	28	35	32	30	27
Assistant Professor	39	23	17	21	25	22
Instructor	1	2	2	0	18	34
Lecturer	13	10	11	12	13	14
Total	126	103	100	96	115	123

Full-Time Instructional Faculty by Tenure Status

	2014	2015	2016	2017	2018	2019
Tenure	67	59	58	58	53	49
On Track	44	28	23	25	27	23
Not On Track	15	16	19	13	35	51
Total	126	103	100	96	115	123

Full-Time Instructional Faculty by Ethnicity

	2014	2015	2016	2017	2018	2019
Black	58	54	53	47	20	55
White	32	19	15	18	15	37
American Indian	1	1	1	2	1	2
Asian	23	20	22	21	5	17
Hispanic	3	3	3	3	2	4
Non-Resident	7	5	5	4	3	5
Unknown	2	1	1	1	69	3
Total	126	103	100	96	115	123

Financial Summary (Revenue)
(\$ in thousands -- 000s omitted)

Source of Income (Total)	2015	2016	2017	2018	2019
Tuition and Fees	5,631	6,117	4,343	4,014	3,468
Government Appropriations	31,663	32,345	33,375	33,007	37,895
Government Grants and Contracts	19,096	15,402	13,081	15,409	14,809
Private Gifts, Grants and Contracts	537	731	631	798	907
Investment Income	112	41	1,075	926	872
Other Core Revenues	1,182	2,344	1,764	3,260	3,775
Total Core Revenues	58,221	56,982	54,518	57,418	61,729
TOTAL	\$63,729	\$62,144	\$58,518	\$60,722	\$65,881
Source of Income (% of Total)	2015	2016	2017	2018	2019
Tuition and Fees	10.00%	11.00%	8.00%	7.00%	6.00%
Government Appropriations	54.00%	57.00%	61.00%	57.00%	61.00%
Government Grants and Contracts	33.00%	27.00%	24.00%	27.00%	24.00%
Private Gifts, Grants and Contracts	1.00%	1.00%	1.00%	1.00%	1.00%
Investment Income	0.00%	0.00%	2.00%	2.00%	1.00%
Other Core Revenues	2.00%	4.00%	3.00%	6.00%	6.00%
Total Core Revenues	100.00%	100.00%	100.00%	100.00%	100.00%

Source: IPEDS Finance

Financial Summary (Expenditures)

(\$ in thousands -- 000s omitted)

Continued

Expenditures (Total)	2015	2016	2017	2018	2019
Instruction	19,343	16,475	15,979	16,955	18,487
Research	1,322	1,065	690	1,112	1,081
Public Service	1,199	1,052	1,211	1,105	1,222
Academic Support	4,271	3,585	3,495	2,930	3,479
Institutional Support	7,720	10,674	11,687	11,899	9,588
Student Services	10,211	6,975	8,247	10,054	9,497
Other Core Expenses	4,385	7,066	2,940	4,587	4,571
Total Core Expenses	48,452	46,891	44,252	48,645	47,928
TOTAL	\$64,491	\$61,551	\$57,996	\$62,244	\$65,654
Expenditures (% of Total)	2015	2016	2017	2018	2019
Instruction	40.00%	35.00%	36.00%	35.00%	39.00%
Research	3.00%	2.00%	2.00%	2.00%	2.00%
Public Service	2.00%	2.00%	3.00%	2.00%	3.00%
Academic Support	9.00%	8.00%	8.00%	6.00%	7.00%
Institutional Support	16.00%	23.00%	26.00%	24.00%	20.00%
Student Services	21.00%	15.00%	19.00%	21.00%	20.00%
Other Core Expenses	9.00%	15.00%	7.00%	9.00%	10.00%
Total Core Expenses	100.00%	100.00%	100.00%	100.00%	100.00%

Source: IPEDS Finance

Facilities

	Total		Type of Usage											
			Classrooms		Laboratories		Library Space		Office Space		Residential		Other	
	NSF	%	NSF	%	NSF	%	NSF	%	NSF	%	NSF	%	NSF	%
001 --- MOORE HALL	24172	100	4258	17.62	3993	16.52	522	2.16	6541	27.06	-	-	8858	36.65
002 --- LESTER HALL	11579	100	2676	23.11	639	5.52	-	-	4546	39.26	-	-	3718	32.11
003 --- WILLIAMS HALL	23025	100	4361	18.94	781	3.39	-	-	4368	18.97	-	-	13515	58.7
005 --- JOHNSON HALL	18719	100	7571	40.45	4637	24.77	-	-	4228	22.59	-	-	2283	12.2
006 --- GR LITTLE LIBRARY	39178	100	-	-	-	-	27803	70.97	1283	3.27	-	-	10092	25.76
011 --- SYMERA HALL	11134	100	-	-	-	-	-	-	-	-	-	-	11134	100
012 --- CARDWELL-HOFFLER INF	4967	100	-	-	-	-	-	-	105	2.11	-	-	4862	97.89
013 --- TRIGG HALL	4968	100	-	-	-	-	147	2.96	3155	63.51	-	-	1666	33.53
014 --- HUGH CALE HALL	9910	100	-	-	-	-	528	5.33	231	2.33	6853	69.15	2298	23.19
015 --- BIAS HALL	19426	100	-	-	-	-	384	1.98	-	-	16763	86.29	2279	11.73
016 --- BUTLER HALL	16588	100	-	-	-	-	369	2.22	94	0.57	11936	71.96	4189	25.25
017 --- DOLES HALL	13191	100	-	-	-	-	881	6.68	148	1.12	9340	70.81	2822	21.39
020 --- LANE HALL	7259	100	3102	42.73	1812	24.96	-	-	1977	27.24	-	-	368	5.07
021 --- TV/TELECOMMUNICATIO N	1741	100	-	-	-	-	-	-	676	38.83	-	-	1065	61.17
023 --- SEARS BUILDING	2676	100	-	-	-	-	-	-	988	36.92	-	-	1688	63.08
025 --- RIDLEY HALL	8031	100	-	-	-	-	-	-	-	-	-	-	8031	100
026 --- BEDELL HALL	18651	100	-	-	-	-	-	-	136	0.73	-	-	18515	99.27
100 --- PRINCIPALS HOUSE	2862	100	-	-	-	-	-	-	2862	100	-	-	-	-
102 --- 2034 WEEKSVILLE	1124	100	-	-	-	-	-	-	-	-	-	-	1124	100
103 --- 2036 WEEKSVILLE	851	100	-	-	-	-	-	-	-	-	-	-	851	100
104 --- 2038 WEEKSVILLE	1124	100	-	-	-	-	-	-	-	-	-	-	1124	100
105 --- 2040 WEEKSVILLE	851	100	-	-	-	-	-	-	-	-	-	-	851	100
108 --- HERRINGTON RD RESID	1797	100	-	-	-	-	-	-	-	-	-	-	1797	100
110 --- PURCHASING	1085	100	-	-	-	-	-	-	-	-	-	-	1085	100
117 --- WAMACK HALL	18098	100	-	-	-	-	817	4.51	96	0.53	13730	75.86	3455	19.09
118 --- MITCHELL-LEWIS HALL	25280	100	-	-	-	-	870	3.44	50	0.2	19073	75.45	5287	20.91
119 --- VAUGHAN CNTR - POOL	13938	100	966	6.93	-	-	-	-	2715	19.48	-	-	10257	73.59
119A --- VAUGHAN CNTR - GYM	63694	100	2872	4.51	-	-	-	-	2331	3.66	-	-	58491	91.83
121 --- DIXON HALL	26146	100	1909	7.3	16967	64.89	-	-	922	3.53	-	-	6348	24.28
122 --- THOMAS-JENKINS HALL	8563	100	-	-	-	-	-	-	1734	20.25	-	-	6829	79.75

	Total		Type of Usage												
	NSF	%	Classrooms		Laboratories		Library Space		Office Space		Residential		Other		
			NSF	%	NSF	%	NSF	%	NSF	%	NSF	%	NSF	%	
122A --- STORAGE-WAREHOUSE	5701	100	-	-	-	-	-	-	-	-	-	-	-	5701	100
123 --- HAZ CHEM (JENKINS)	76	100	-	-	-	-	-	-	-	-	-	-	-	76	100
124 --- HAZ GASES POOL	76	100	-	-	-	-	-	-	-	-	-	-	-	76	100
125 --- MCLENDON HALL	8148	100	738	9.06	-	-	-	-	2919	35.82	-	-	-	4491	55.12
126 --- GRIFFIN HALL	12632	100	418	3.31	-	-	-	-	4684	37.08	-	-	-	7530	59.61
127 --- SLOAN HALL	6328	100	-	-	-	-	-	-	-	-	6328	100	-	-	-
128 --- MIDGETT HALL	6328	100	-	-	-	-	-	-	-	-	6328	100	-	-	-
129 --- COMPLEX UNIT C	6328	100	-	-	-	-	-	-	-	-	6328	100	-	-	-
130 --- COMPLEX UNIT D	6328	100	-	-	-	-	-	-	-	-	6328	100	-	-	-
131 --- COMPLEX UNIT E	6328	100	-	-	-	-	-	-	-	-	6328	100	-	-	-
132 --- COMPLEX UNIT F	6328	100	-	-	-	-	-	-	-	-	6328	100	-	-	-
133 --- COMPLEX UNIT G	3133	100	-	-	-	-	182	5.81	88	2.81	686	21.9	2177	69.49	-
134 --- CHANCELLOR'S RES	3707	100	-	-	-	-	-	-	-	-	-	-	3707	100	-
135 --- K.E. WHITE GRAD CTR	21550	100	-	-	-	-	-	-	1368	6.35	242	1.12	19940	92.53	-
136 --- E.V. WILKINS	2923	100	-	-	1340	45.84	-	-	654	22.37	-	-	929	31.78	-
139 --- M.D.THORPE ADMIN.	22115	100	-	-	-	-	286	1.29	14143	63.95	-	-	7686	34.75	-
142 --- CHANCELLOR RES. STGE	260	100	-	-	-	-	-	-	-	-	-	-	260	100	-
145 --- JENKINS SCIENCE BLDG	34023	100	7606	22.36	14849	43.64	445	1.31	4936	14.51	-	-	6187	18.18	-
146 --- COMMUTER CENTER	8959	100	-	-	-	-	-	-	628	7.01	-	-	8331	92.99	-
147 --- UNIVERSITY TOWER	24925	100	-	-	-	-	876	3.51	120	0.48	20006	80.26	3923	15.74	-
148 --- FINE ARTS	32133	100	1650	5.13	11997	37.34	358	1.11	3604	11.22	-	-	14524	45.2	-
149 --- ITC BUILDING	14462	100	2354	16.28	1664	11.51	710	4.91	3553	24.57	-	-	6181	42.74	-
151 --- FIELD HOUSE/PE CTR	7286	100	1357	18.62	-	-	-	-	950	13.04	-	-	4979	68.34	-
153 --- UNIVERSITY SUITES	39192	100	-	-	-	-	1953	4.98	-	-	34680	88.49	2559	6.53	-
154 --- VIKING VILLAGE	109732	100	-	-	-	-	-	-	120	0.11	77381	70.52	32231	29.37	-
155 --- STUDENT CENTER	18382	100	-	-	-	-	1463	7.96	2372	12.9	-	-	14547	79.14	-
156 --- PHARMACY COMPLEX	30115	100	10552	35.04	7991	26.53	556	1.85	4196	13.93	-	-	6820	22.65	-
157 --- GILCHRIST COMPLEX	25649	100	11608	45.26	862	3.36	605	2.36	6864	26.76	-	-	5710	22.26	-
Total	863775	100	63998	7.41	67532	7.82	39755	4.6	90385	10.46	248658	28.79	353447	40.92	-